

Fact & Opinion

REM 4002

A TEACHING RESOURCE FROM...



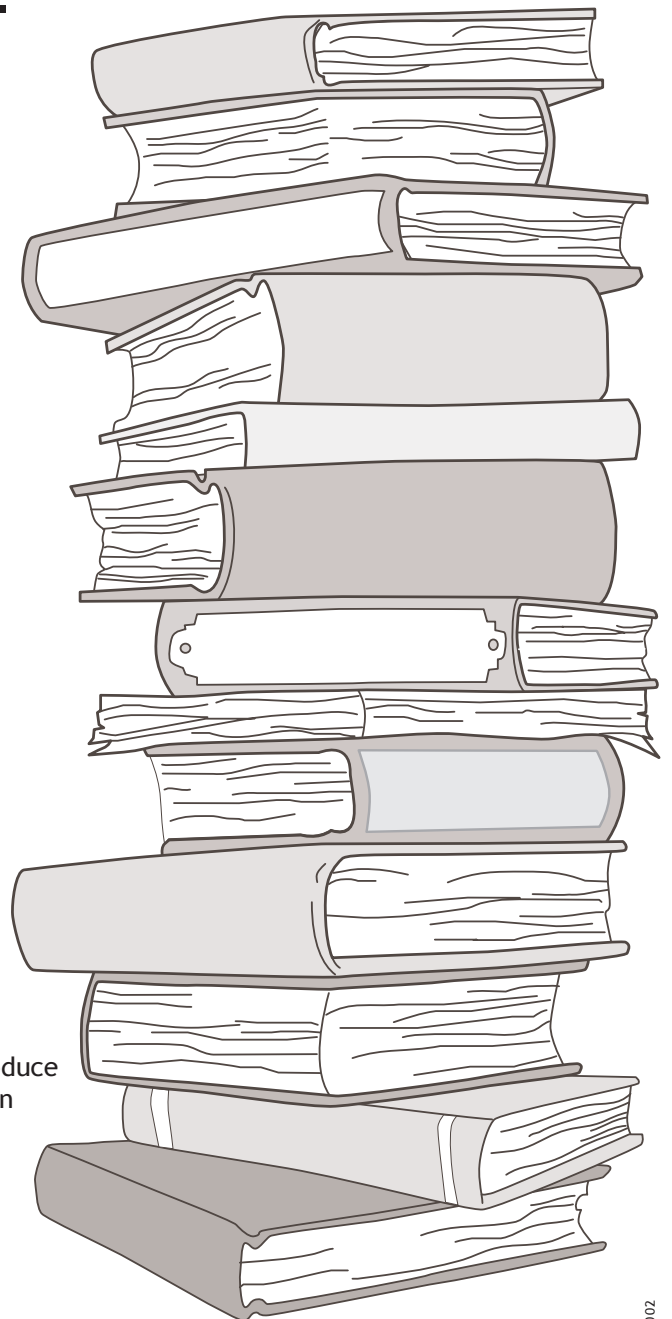
©2003

Copyright by Remedia Publications, Inc.
All Rights Reserved. Printed in the U.S.A.

The purchase of this unit entitles the individual teacher to reproduce copies for classroom use. The reproduction of any part for an entire school or school system is strictly prohibited.

To find Remedia products in a store near you, visit:
<http://www.rempub.com/stores>

REMEDIA PUBLICATIONS, INC.
15887 N. 76TH STREET • SUITE 120 • SCOTTSDALE, AZ • 85260



INTRODUCTION

The exercises in this book provide valuable practice in the specific reading skill that emphasizes recognizing facts and opinions. The lessons begin with “fact” stories, move on to “opinion” stories, and then stories containing both facts and opinions. Comprehension questions following each story require the reader to know which statements are facts, which are opinions, and the difference between them.

Included are a pre/post test, answer key, and bonus writing activities related to the various text topics

Fact & Opinion was designed for use in grades 4-5 and with students in grades 6-12 whose reading skills are below grade level. Readability is on the 3rd-4th grade level.

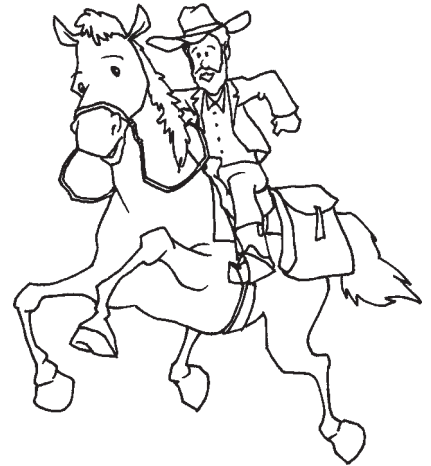
CONTENTS

The Pony Express	1
My Tarantula	2
The Lost Money	3
The Manatee	4
Diamonds	5
Cars	6
Write On!	7
Sol	8
Couch Potato	9
Measurement Systems	10
No School for Andrea	11
Dear Diary	12
At The Movies	13
Horse Sense	14
A Bird's-Eye View	15
Popcorn	16
Camels	17
Elephants	18
Good Bugs, Bad Bugs	19
The Nile	20
The First Two Presidents	21
Rats!	22
Earthquakes	23
Men Who Became Companies	24
Pre/Post Test	

Name _____

A fact tells something that is true.

The Pony Express



Fact 1: The pony express began rapid mail delivery on April 3, 1860.

Fact 2: It lasted less than two years. Overland telegraph services soon offered cheaper rates.

Fact 3: For \$5.00 an ounce, letters were delivered on horseback from St. Joseph, Missouri, to Sacramento, California, in only ten days, half the usual time.

Fact 4: Horses were changed every 10 to 15 miles at the 190 way stations along the route.

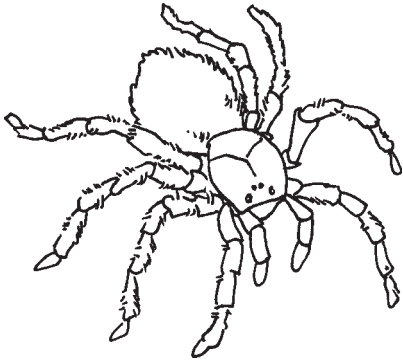
Fact 5: There were many riders along the way. Each rider rode 75 miles per run through dangerous country.

The facts above describe pony express service. Write the information that tells:

1. what it was _____
2. where the route began and ended _____
3. how many miles each rider rode _____
4. how often and where the horses were changed _____
5. why it went out of business _____

Bonus: William “Buffalo Bill” Cody was one of the most famous of the pony express riders. Look up Buffalo Bill in an encyclopedia. Write three interesting facts about his life.

Name _____



My Tarantula

My neighbor came home from vacation last month. He brought a special surprise for me! It is a tarantula spider! My neighbor saw a lot of them as he drove through Texas.

Tarantula spiders are very interesting. They are not dangerous to people, but their bite can hurt. If tarantulas are handled gently, they will not bite.

Tarantulas are covered with many smooth hairs. I like to hold my spider in my hand. I can pet its abdomen. It feels soft and silky.

I keep my tarantula in an empty aquarium. I catch crickets, grasshoppers, moths, and June bugs for its dinner. I also give it water in a dish. I decorated its home with rocks and driftwood.

I learned that my tarantula will molt once a year. Its skeleton is on the outside of its body. The spider keeps growing but the skeleton does not. When the tarantula grows too large for its skeleton, it is shed. A new, larger one is right under the old one. Tarantulas can live to be about 20 years old. I don't know how old mine is. I'm planning to take good care of mine. I want it to live as long as possible.

Find the facts. Answer each question with a complete sentence.

1. Why might a tarantula bite a person?

2. What do tarantulas eat?

3. Does a tarantula need to drink water?

4. Why does a tarantula molt, or shed, its skeleton?

5. How long can a tarantula live?

Bonus: Name two other animals that molt. Tell what part of their bodies they shed. Write your answer in complete sentences.

Name _____

The Lost Money



"I lost a \$5 bill," Mark told his best friend, Brad. "What could have happened to it?" He searched all his pockets, but they were empty.

"Let's retrace our steps," suggested Brad. "We're only half a block from school. Maybe you dropped it somewhere in the school yard." Mark and Brad turned around and walked back toward the large, red brick building.

"I don't see it anywhere," Mark said as they entered the yard. "Maybe someone found it."

"Did you lose something, boys?" asked Mrs. Miller, the school secretary, who was just leaving the building.

"I lost \$5," Mark told her.

"Hmmm," said Mrs. Miller, "that wouldn't be the same \$5 you bought school supplies with earlier, would it?"

Mark grinned, somewhat embarrassed. "That's it!" he replied. "I forgot about the notebooks and pencils I bought."

"Mystery solved," commented Brad. "Now we can go home."

Find the facts. Answer each question with a complete sentence.

1. Who are Mark and Brad?

2. How far were the boys from school?

3. What did the school building look like?

4. Who is Mrs. Miller?

5. What did Mark buy earlier in the day?

Bonus: What if Mark hadn't spent the money on school supplies? Rewrite the ending of the story to show what else could have happened.

Name _____



The Manatee

- Florida manatees are sometimes called Sea Cows. They are large, peaceful, mammals. They move slowly. Adult manatees weigh about 1000 pounds and are 10 feet long.
- Manatees live in shallow rivers, bays, and canals. They are found in Florida in the winter. During warm months, they are seen in the waters of other southern states.
- Humans are a danger to the Florida manatee. The animals get run over by boats. They swallow fishing lines and hooks. Pollution and litter ruin their food supply.
- Federal law makes it illegal to capture or kill any marine mammal. Florida state law prevents people from bothering manatees. Some places have boat speed limits to help this gentle animal.
- Manatees eat only plants. They use their flippers to push food to their mouths. They like seaweed and other water plants. Manatees can eat 100-150 pounds of plants each day.

The facts above describe manatees. Write the information that tells:

1. how they look _____

2. what they eat _____

3. where they live _____

4. why they need help _____

5. how they are being helped _____

Bonus: Florida is called the Sunshine State. Find out about Florida's weather and write one or two sentences about it.